

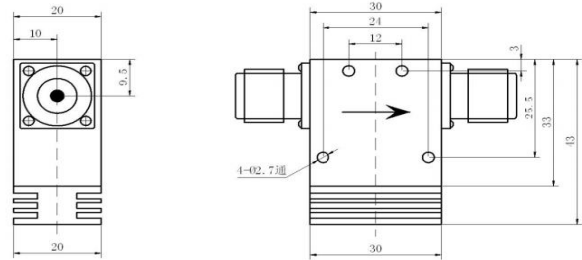
Coaxial Isolators

P/N: EIC009A001A0

Outline Drawing

【Features】

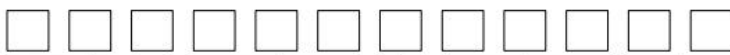
- ❖ Wide frequency bandwidth
- ❖ High isolation between input and output
- ❖ Low Insertion Loss
- ❖ Low VSWR
- ❖ Wide temperature stability



【Specifications】

Model No.	EIC009A001A0
Connector Type	SMAK
Frequency Range	6GHz~12GHz
Insertion Loss	0.7 dB.
Isolation	16 dB.
VSWR	1.45
Power Handling	5W Forward
Operating Temp.	- 30~ + 95℃

【Model Number Description】



- Reserve number, temporarily decided as A0
- Serial number, 001-999 shows different products
- Operating frequency range code, A-Z shows different frequency range
- Center frequency, unit GHz
 $f_0 < 1\text{GHz}$, P01-P99
 $f_0 > 1\text{GHz}$, 001-999
 For example, center frequency is 280MHz, it shows P28
 If the center frequency is 3GHz, it shows 003
- Abbreviation of product species
 EIC: Coaxial Isolator



Model No.	Connector Type	Frequency Range GHz	Band Width MHz	Insertion Loss dB.Max	Isolation dB.Min	VSWR Max	Operating Temp °C	Size L*W*H mm
EICP23A00XA0	SMA/N	0.2-0.25	8	0.6	16	1.40	20 ~+60	50.5*80*22
EICP20A00XA0	SMA/N	0.15-0.25	8	0.6	16	1.40	20~+60	70*97*22
EICP35A00XA0	SMA/N	0.3-0.4	30	0.3	25	1.20	-15~+60	52*57.5*22
EICP35A00XA1	SMA/N	0.3-0.4	30	0.3	25	1.20	-15~+60	52*84.5*22
EICP50A00XA0	SMA/N	0.4-0.6	30	0.3	25	1.20	-15~+60	44*49.5*21
EICP50A00XA1	SMA/N	0.4-0.6	30	0.3	25	1.20	-15~+60	44*76.5*21
EICP50A00XA2	SMA/N	0.4-0.6	10	0.3	25	1.20	-15~+60	35*38*20
EICP80A00XA0	SMA/N	0.6-1.0	30	0.3	25	1.20	-30~+70	35*38*20
			200	0.4	20	1.25		
EICP80A00XA1	SMA/N	0.6-1.0	30	0.3	25	1.20	-30~+70	35*60*20
			200	0.4	20	1.25		
EIC006A00XA0	SMA/N	0.8-12	70	0.3	25	1.20	-30~+70	30*33*20
			200	0.4	20	1.25		
EIC006A00XA1	SMA/N	0.8-12	70	0.3	25	1.20	-30~+70	30*43*20
			200	0.4	20	1.25		
EIC006A00XA2	SMA	0.8-12	70	0.3	25	1.20	-30~+70	30*33*15
			200	0.4	20	1.25		
EIC002A00XA0	SMA/N	0.95-2.5	70	0.3	25	1.20	-30~+70	25.4*28.5*20
EIC001A00XA0	SMA/N	0.1-2.5	200	0.4	20	1.25	-30~+70	25.4*28.5*20
EIC002A00XA1	SMA/N	0.95-2.5	70	0.3	25	1.20	-30~+70	25.4*38.5*20
EIC002A00XA2	SMA/N	0.95-2.5	70	0.3	25	1.20	-30~+70	25.4*38.5*20
EIC001A00XA1	SMA/N	1.0-2.5	200	0.4	20	1.25	-30~+70	25.4*38.5*20
EIC00A00XA3	SMA	0.95-2.5	70	0.3	25	1.20	-30~+70	25.4*28.5*15
EIC001A00XA2	SMA	1.0-2.5	200	0.4	20	1.25	-30~+70	25.4*28.5*15
EIC001B00XA0	SMA	0.8-2.0	25	0.3	25	1.20	-30~+70	25*25*15
EIC002B00XA0	SMA	1.0-2.0	200	0.4	20	1.25	-30~+70	25*25*15



Model No.	Connector Type	Frequency Range GHz	Band Width MHz	Insertion Loss dB.Max	Isolation dB.Min	VSWR Max	Operating Temp °C	Size L*W*H mm
EIC002C00XA0	SMA	1.4-2.4	70	0.3	25	1.20	-30~+70	20*25.4*15
EIC002D00XA0	SMA/N	1.8-3.0	200	0.3	25	1.20	-30~+70	28*30*19
			400	0.4	23	1.20		
EIC003A00XA0	SMA	1.8-3.5	200	0.3	25	1.20	-30~+70	25*25*15
			400	0.4	20	1.20		
EIC003B00XA0	SMA	2-3.5	200	0.3	23	1.20	-30~+70	20*25*14
EIC005A00XA0	SMA	3.5-6.5	300	0.3	25	1.20	-40~+75	16*26*15
			600	0.4	23	1.20		
EIC005A00XA1	N	3.5-6.5	300	0.3	25	1.20	-40~+75	16*26*19
			600	0.4	23	1.20		
EIC005A00XA2	SMA	3.5-6.5	300	0.3	25	1.20	-40~+75	16*26*13
			600	0.4	23	1.20		
EIC007A00XA0	SMA	5.0-8.0	300	0.3	25	1.20	-40~+75	16*24*14
			600	0.4	23	1.20		
EIC013A00XA0	SMA	7.0-18	500	0.3	25	1.20	-40~+75	12*20*13
			1000	0.4	20	1.20		
EIC013A00XA1	SMA	7.0-18	500	0.3	25	1.20	-40~+75	12*20*13
			1000	0.4	23	1.20		
EIC013A00XA2	N	7.0-18	500	0.3	25	1.20	-40~+75	12*23*19
			1000	0.4	23	1.20		

Note: 1, X shows different product in model, A0, A1, A2 etc. are used to make a distinction between products with same frequency range.

2, All the above are technical indexes at normal temperature.

3, Above devices can be dedicated to the design according to customers' needs.

4, If you have other requirements or the table does not list of technical parameters ,please contact us.